



Instructions

JEEP JL - SIDE MOLLE PANELS

Thank you for purchasing your JL Side MOLLE Panels from AAL! We greatly appreciate your trust in our company. We take that purchase and your commitment to us very seriously. If you have any questions along the way, please don't hesitate to give us a call at 385.202.4188.

****Please read instructions carefully****

Tools Required:

- M4 Allen Socket/Wrench

What's included:

- Driver Upper Panel
- Driver Lower Panel
- Connection Bracket
- Passenger Upper Panel
- Passenger Lower Panel

Hardware

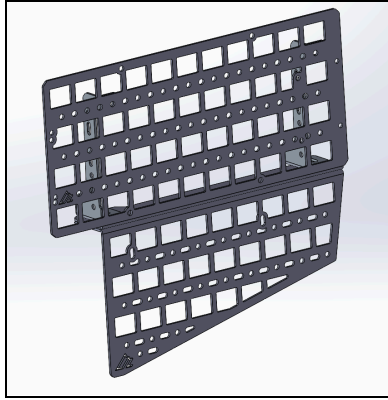
M6x14mm Button Head Flange Bolts 4



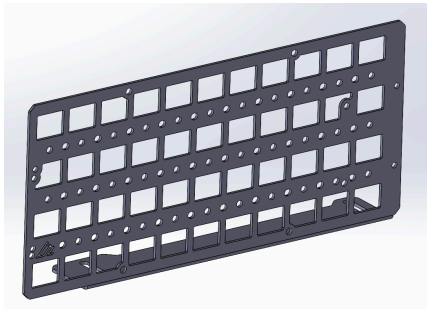
M6 Nylon Lock Nuts 4



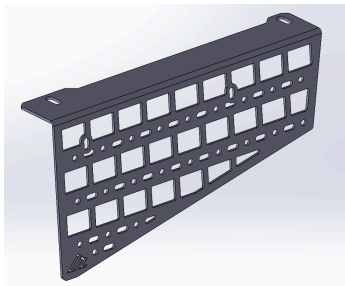
Driver Side MOLLE Parts:



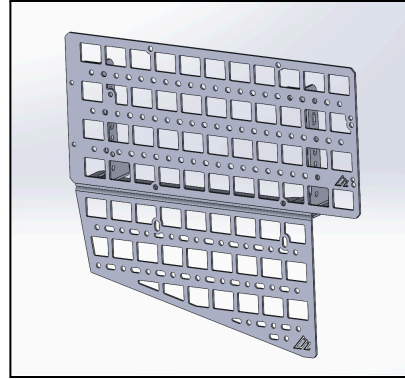
Driver Upper Panel (1):



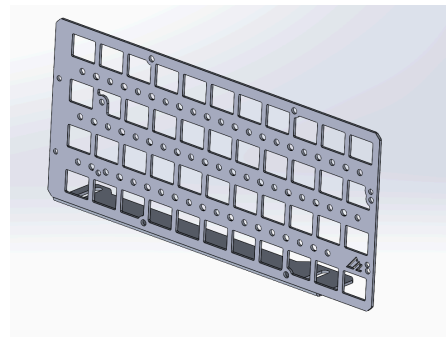
Driver Lower Panel (1):



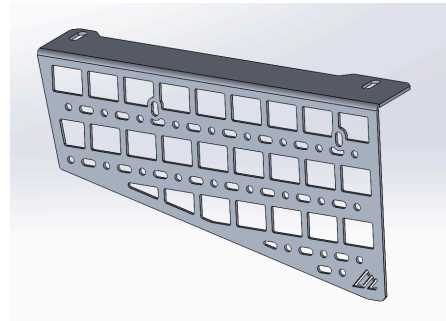
Passenger Side MOLLE Parts:



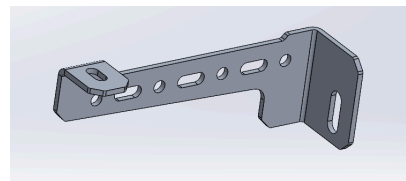
Passenger Upper Panel (1):



Passenger Lower Panel



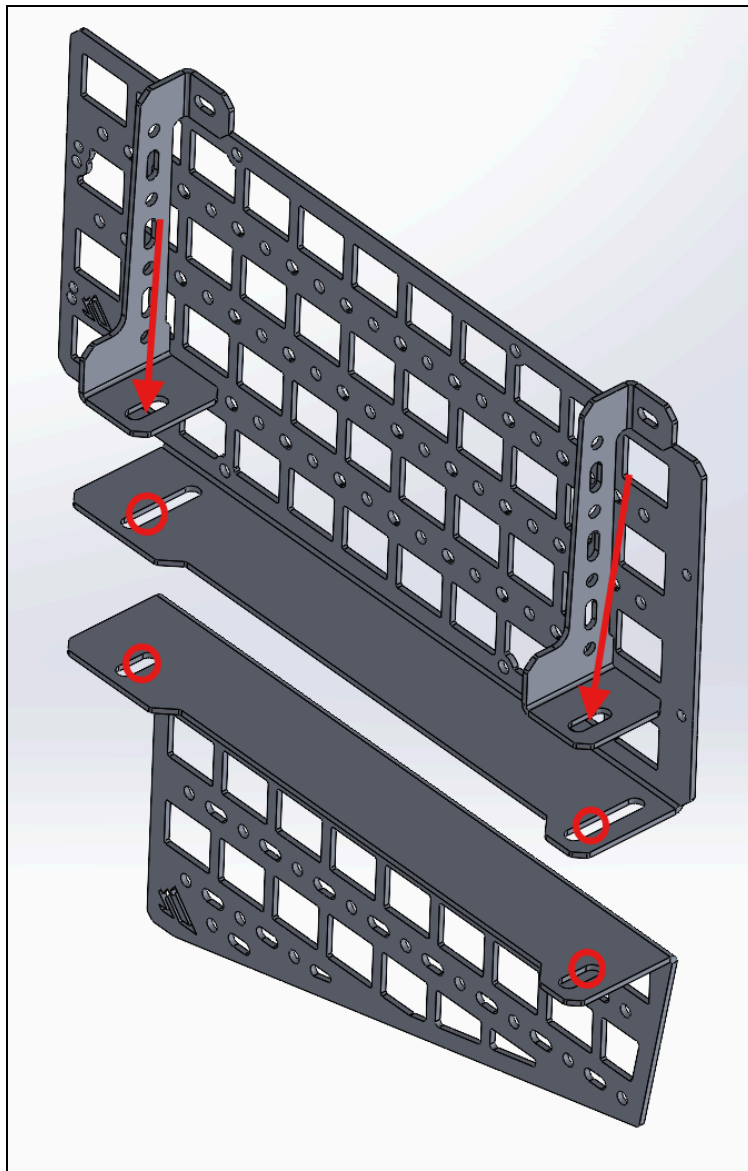
Connection Bracket (1):



Step 1 - Connect the Upper and Lower panels

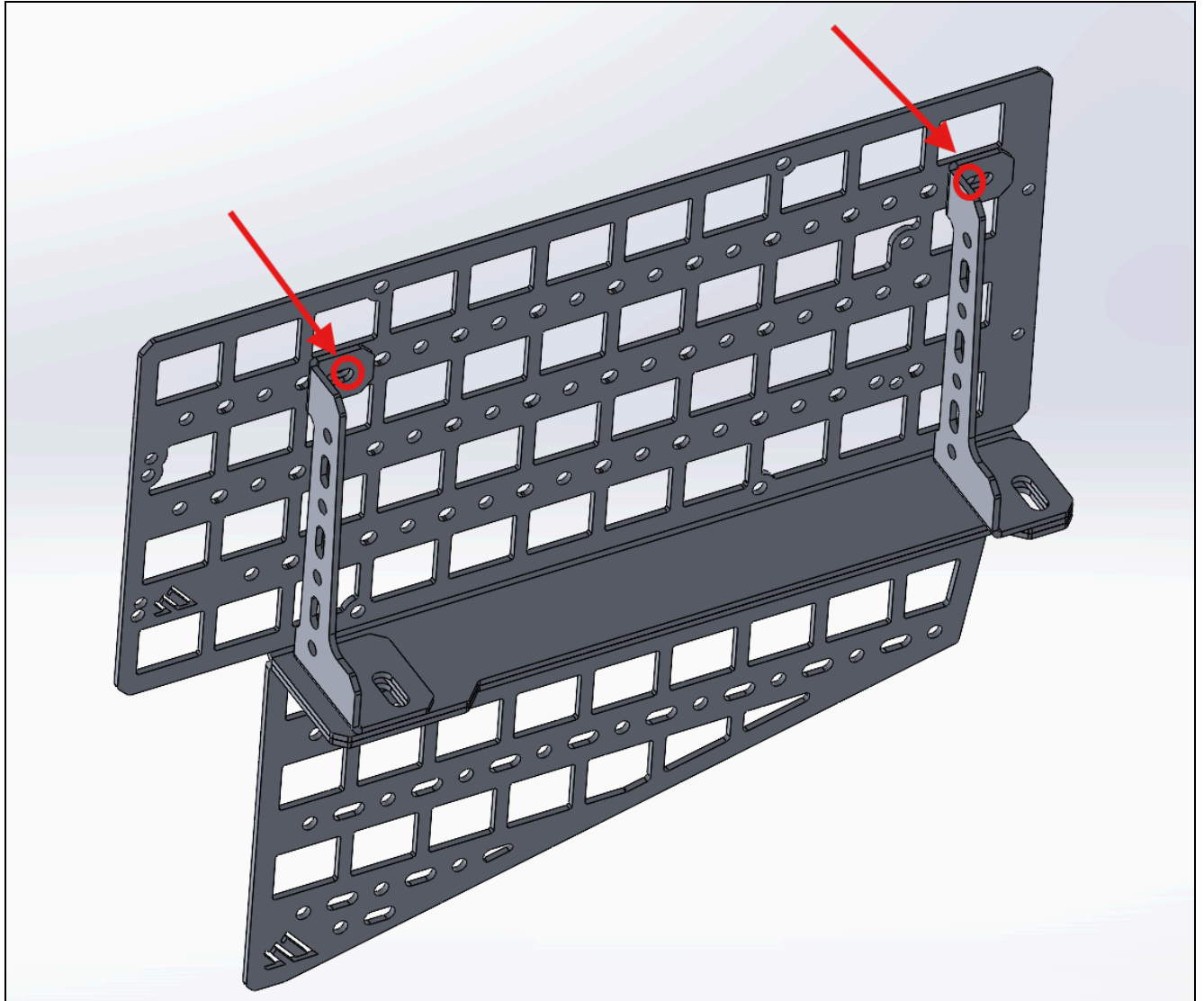
The panel's assembly begins by fastening the Connection Bracket to the Lower and upper panels on each side. Do this using the (2) Factory bolts on the side platform. Make sure to insert the bolt from the top.

Note that the installation of the driver and passenger sides are identical. Just use the AAL Logo as a reference, it should lead correctly, and be closest to the front of the vehicle on both sides. This file will use the passenger side as an example.



Step 2 - fasten the connection bracket through the molle panel

The second and final step is to fasten the upper edge of the bracket to the molle panel. We do this by using (2) M6x14mm Button Head Bolts and (2) M6 Nylon Lock Nuts per side and bolting through the front of the panel as shown below.



Share Your Photos!

We take great pride in building our products and we hope that pride extends to you after installing your JL Side MOLLE Panels. If you are able to share your photos online (Facebook and Instagram), please tag **@AmericanAdventureLab**. We would love to see how it turned out and give you some reciprocal attention in return!

Congrats! You're all done!

Thank you!

At American Adventure Lab, we strive to improve anywhere we can. If you experience any issues with this product or have any suggestions, please let us know.

If you have any questions or concerns, please don't hesitate to reach out to us at 385.202.4188 or via email at Support@erp.adventurelab.com.

